

# NexiusZoom(EVO)

## for gemology

### HIGHLIGHTS

- Designed for gemstone research
- Binocular and trinocular heads
- Standard HWF 10x eyepieces with 22 mm or 23 mm field of view
- Zoom objectives with 0.7 to 4.5x or 0.65 to 5.5x magnification
- Ergonomically designed backwards tilting stand
- 30 Watt halogen transmitted illumination
- 1W LED or 7W fluorescent incident illumination
- Configurations up to 220x magnification

### TECHNICAL SPECIFICATIONS

#### EYEPIECES

The standard NexiusZoom is supplied with a pair of HWF 10x/22 mm eyepieces. The NexiusZoom Evo is supplied with a pair of HWF 10x/23 mm eyepieces

#### HEAD

Binocular or trinocular heads with 45° inclined tubes. Both eyepieces with ± 5 diopter adjustments. Interpupillary distance adjustable between 54 mm and 75 mm

#### OBJECTIVES

The standard NexiusZoom is supplied with a 1:6.7 zoom objective with 0.67x to 4.5x magnifications, a field of view from 33 mm to 4.9 mm. Working distance 110 mm. Standard magnification is 6.7 to 45x

The NexiusZoom Evo is supplied with a 1:8.4 zoom objective with 0.65x to 5.5x magnifications, a field of view from 35.4 mm to 4.2 mm. Working distance approx. 110 mm. Standard magnification is 6.5 to 55x

Auxiliary lenses 0.75x, 1.5x and 2.0x are available.

*All optics are anti-fungus treated and anti-reflection coated for maximum light throughput*

#### STAND

Ergonomically designed stand with backwards 0 to 45° tilting arm with 76 mm head holder, suitable for darkfield and brightfield. Built-in 100-240 V power supply

#### STAGE

Flat darkfield stage with clamp object holder, iris diaphragm and incident illumination. Clamp object holder can be placed on left or right side



● ENZ-1703-GEML



● ENZ-1902-GEML



● ENZ-1903-GEMF



● ENZ-1702-GEMF

#### ILLUMINATION

30 Watt halogen transmitted illumination. 1 Watt LED with adjustable intensity, or 7 Watt fluorescent incident illumination, intensity not adjustable. Both illuminators can be used simultaneously

#### PACKAGE CONTENT

Supplied with power cord, clamp object holder, dust cover, a spare fuse and user manual. All packed in a polystyrene box

MODELS	Binocular	Trinocular	Objective 0.67-4.5	Objective 0.65-5.5	1 W LED incident illumination	7 W fluorescent incident illumination	30 W halogen transmitted illumination	Working distance (mm)
ENZ-1902-GEML	•		•		•		•	110
ENZ-1902-GEMF	•		•			•	•	110
ENZ-1702-GEML	•			•	•		•	110
ENZ-1702-GEMF	•			•		•	•	110
ENZ-1903-GEML		•	•		•		•	110
ENZ-1903-GEMF		•	•			•	•	110
ENZ-1703-GEML		•		•	•		•	110
ENZ-1703-GEMF		•		•		•	•	110

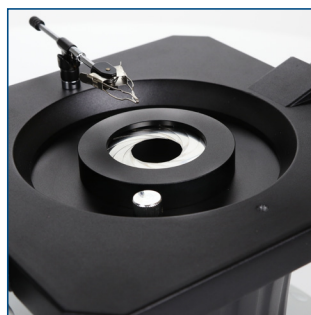
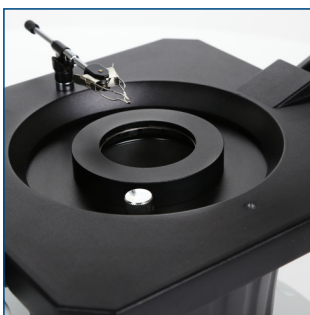
### MAGNIFICATIONS

**NexusZoom** Working distance and field of view with standard HWF 10x / 22 High Wide Field eyepieces

Zoom indication	Objective 1x (standard) Working distance 110 mm		Auxiliary lens 0.75x Working distance 120 mm		Auxiliary lens 1.5x Working distance 53 mm		Auxiliary lens 2x Working distance 30 mm	
	Total Magnifications	Field of view in mm	Total Magnifications	Field of view in mm	Total Magnifications	Field of view in mm	Total Magnifications	Field of view in mm
0.67	6.7	32.8	5.0	43.8	10.1	21.9	13.4	16.4
0.7	7.0	31.4	5.3	41.9	10.5	21.0	14.0	15.7
0.8	8.0	27.5	6.0	36.7	12.0	18.3	16.0	13.8
1.0	10.0	22.0	7.5	29.3	15.0	14.7	20.0	11.0
1.5	15.0	14.7	11.3	19.6	22.5	9.8	30.0	7.3
2.0	20.0	11.0	15.0	14.7	30.0	7.3	40.0	5.5
3.0	30.0	7.3	22.5	9.8	45.0	4.9	60.0	3.7
4.0	40.0	5.5	30.0	7.3	60.0	3.7	80.0	2.8
4.5	45.0	4.9	33.8	6.5	67.5	3.3	90.0	2.4

**NexusZoom Evo** Working distance and field of view with standard HWF 10x / 23 High Wide Field eyepieces

Zoom indication	Objective 1x (standard) Working distance 110 mm		Auxiliary lens 0.75x Working distance 120 mm		Auxiliary lens 1.5x Working distance 53 mm		Auxiliary lens 2x Working distance 30 mm	
	Total Magnifications	Field of view in mm	Total Magnifications	Field of view in mm	Total Magnifications	Field of view in mm	Total Magnifications	Field of view in mm
0.65	6.5	35.4	4.9	47.2	9.8	23.6	13.0	17.7
0.7	7.0	32.9	5.3	43.4	10.5	21.9	14.0	16.4
0.8	8.0	28.8	6.0	38.3	12.0	19.2	16.0	14.4
1.0	10.0	23.0	7.5	30.7	15.0	15.3	20.0	11.5
1.5	15.0	15.3	11.3	20.4	22.5	10.2	30.0	7.7
2.0	20.0	11.5	15.0	15.3	30.0	7.7	40.0	5.8
3.0	30.0	7.7	22.5	10.2	45.0	5.1	60.0	3.8
4.0	40.0	5.8	30.0	7.7	60.0	3.8	80.0	2.9
4.5	45.0	5.1	33.8	6.8	67.5	3.4	90.0	2.6
5.5	55.0	4.2	41.3	5.6	82.5	2.8	110	2.1



## ACCESSORIES AND SPARE PARTS

- ENZ-5302** NexiusZoom binocular head with eyepieces
- ENZ-5303** NexiusZoom trinocular head with eyepieces
- ENZ-5312** NexiusZoom EVO binocular head with eyepieces
- ENZ-5313** NexiusZoom EVO trinocular head with eyepieces
  
- ENZ-6010** Pair of HWF 10x / 22 mm eyepieces
- ENZ-6210** Pair of HWF 10x / 23 mm eyepieces (only suitable for NexiusZoom EVO)
- ENZ-6015** Pair of HWF 15x / 16 mm eyepieces
- ENZ-6020** Pair of HWF 20x / 12 mm eyepieces
- ENZ-6110** HWF 10x / 22 mm eyepiece with micrometer
- ENZ-6099** Pair of eyecups
  
- ENZ-8907** Auxiliary lens 0.75x. Working distance 120 mm
- ENZ-8915** Auxiliary lens 1.5x. Working distance 53 mm
- ENZ-8920** Auxiliary lens 2.0x. Working distance 30 mm. Not suitable for ENZ-1902-S and ENZ-1903-S
- ENZ-8950** Protection glass for NexiusZoom head. Not suitable with auxiliary lenses
  
- ENZ-9525** 360° rotatable analyzer in mount to be screwed under head of NexiusZoom
- ENZ-9527** Polarization filter for GEM stands of NexiusZoom
- ENZ-9572-G** Adjustable GEM object clamp for NexiusZoom with tilting stand for gemology
- ENZ-9850** C-mount adapter with 0.5x lens for 1/2" cameras. Suitable for trinocular models
  
- EAE-5130** Universal SLR camera adapter with 2x projection lens for 23.2 mm tubes. Needs T2 adapter
- EAE-5025** T2 adapter for Nikon D digital SLR cameras
- EAE-5040** T2 adapter for Canon EOS digital SLR cameras  
*Other T2 adapters on request*
  
- EAE-1112** Object micrometer 50 mm (divided in 500 parts on glass slide 76 x 26 mm)
- ESL-3678** Halogen spare bulb 6V, 30 W for NexiusZoom gemology



● ENZ-1902-GEML

Euromex Microscopen bv • Papenkamp 20 • 6836 BD Arnhem • The Netherlands • T +31 (0) 26 323 22 11 • info@euromex.com • www.euromex.com

